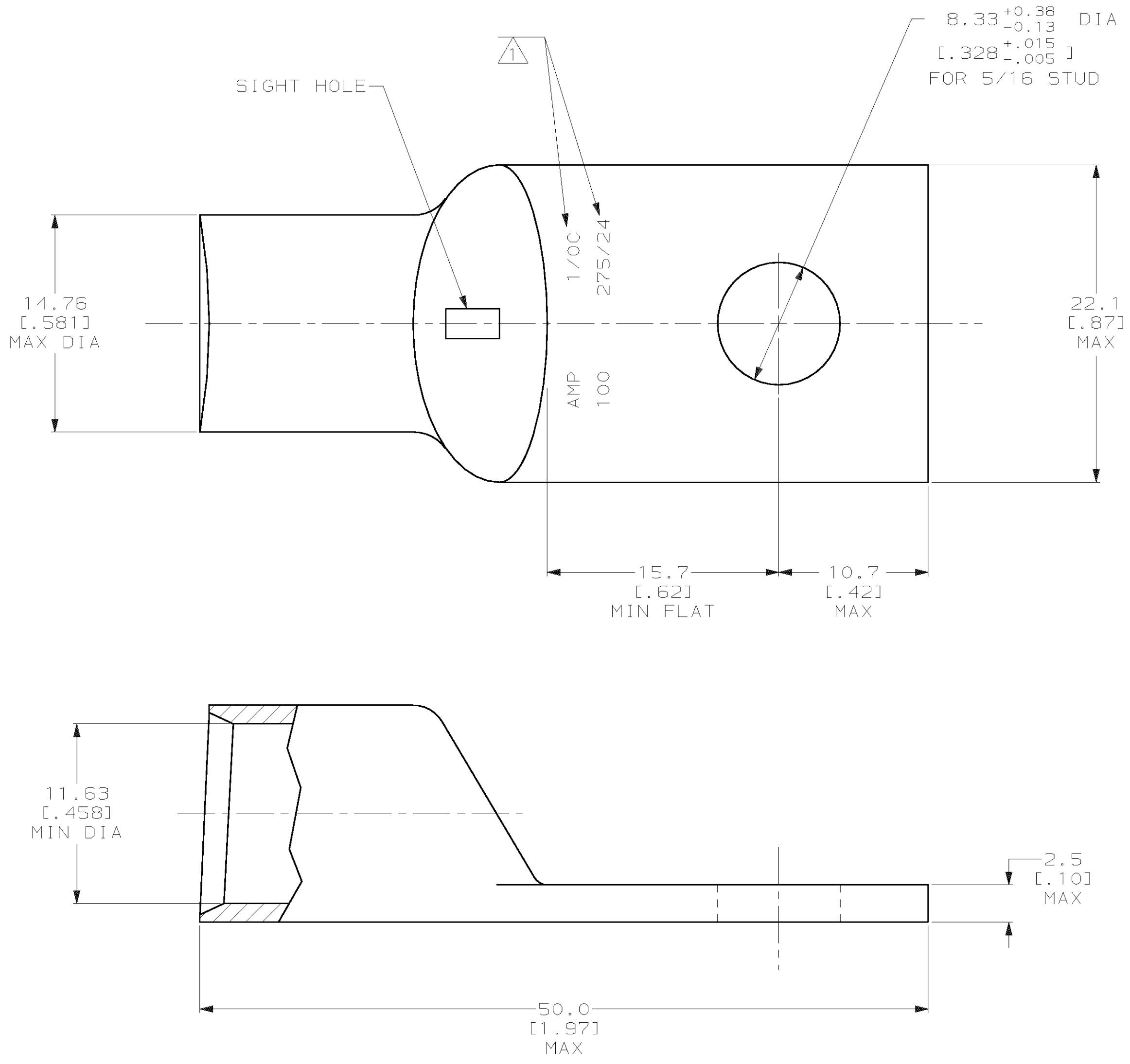


THIS DRAWING IS UNPUBLISHED. RELEASED FOR PUBLICATION, 19 .
 © COPYRIGHT 19 BY AMP INCORPORATED. ALL INTERNATIONAL RIGHTS RESERVED.

LOC	DIST	P	F	ZONE	LTR	DESCRIPTION	DATE	APPD
G	86					Y REV PER 0G3A-0561-01	07OCT02	JP MS

METRIC
 DIMENSIONS LISTED IN mm [INCHES]



1 STAMP AMP 1/0C 100 275/24 APPROX AS SHOWN

325302

325302
 PART NO

AMP INCORPORATED
CUSTOMER SERVICE SYSTEMS

MAX RECOMMENDED OPERATING TEMPERATURE:
 170°C MAX

DO NOT SCALE PRINT. UNLESS SPECIFIED
 DIMENSIONS IN mm [INCHES]
 TOLERANCES ON:
 2 PLC DEC ± 0.20 [.008]
 3 PLC DEC ± -
 ANGLES ± -

DR 30AUG94 DK SCHRUM
 CHK 31AUG94 AJ KAUFMAN
 APPD 31AUG94 RE ROSER
 APPD 31AUG94 JL MECKLEY

AMP AMP Incorporated
 Harrisburg, PA 17105-3608

FOR ADDITIONAL PRODUCT INFORMATION OR COPIES OF DRAWINGS AND TECHNICAL DOCUMENTS

PRODUCT INFORMATION CENTER
 1-800-522-6752

VOLTAGE RATING:
 NOT APPLICABLE

MATERIAL
 COPPER PER ASTM B-75 ANNEALED

PRODUCT SPEC
 -

NAME
**TERMINAL, AMPOWER,
 WIRE SIZE: 1/0 AWG**

FOR APPLICATION TOOLING INFORMATION

TOOLING ASSISTANCE CENTER
 1-800-722-1111

WIRE CROSS SECTIONAL AREA RANGE:
 42.41-60.55mm² [83,700-119,500] CIR MILS
 STRANDED

FINISH
 TIN PLATE
 0.00381 [.000150] MIN THK PER MIL-T-10727

APPLICATION SPEC
 -

SIZE CAGE CODE DRAWING NO
 C 00779 C-325302

FOR ORDER ENTRY

1-800-526-5142

THIS DRAWING IS A CONTROLLED DOCUMENT FOR AMP INCORPORATED. IT IS SUBJECT TO CHANGE AND THE CONTROLLING ENGINEERING ORGANIZATION SHOULD BE CONTACTED FOR THE LATEST REVISION.

WEIGHT
 -

SCALE 4:1 SHEET 1 OF 1